

Agilent 6540 Accurate Mass Q-TOF LC/MS Systems

EXCEPTIONAL PERFORMANCE WITHOUT COMPROMISE

The Measure of Confidence



Agilent Technologies

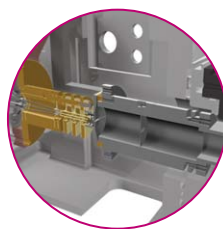
INNOVATIVE TECHNOLOGY FOR CONFIDENT MEASUREMENT

The Agilent 6540 Ultra High Definition (UHD) Accurate Mass Quadrupole Time-of-Flight (Q-TOF) LC/MS system is designed to provide high quality data and advanced analytical capabilities for profiling, identifying, and characterizing both small molecules and biomolecules. Robust and routine mass resolution distinguishes target analytes from interferences, while accurate mass measurements and isotopic fidelity confirm molecular formulae with greater confidence.

Dual-stage ion mirror optimizes second-order time focusing for **higher mass resolution**.



Ion Beam Compression (IBC) **improves mass resolution and mass accuracy** while maintaining high sensitivity.



Hexapole collision cell enables **faster generation of high quality MS/MS spectra**.



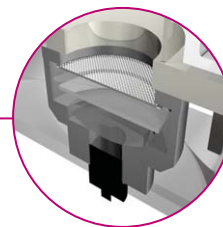
Jet Stream **increases sensitivity up to 10 fold** while increasing system robustness.



INVAR flight tube in vacuum insulated shell **maintains excellent mass accuracy over wide temperature variations 24/7**. Added ion path length increases mass resolution to 40,000.



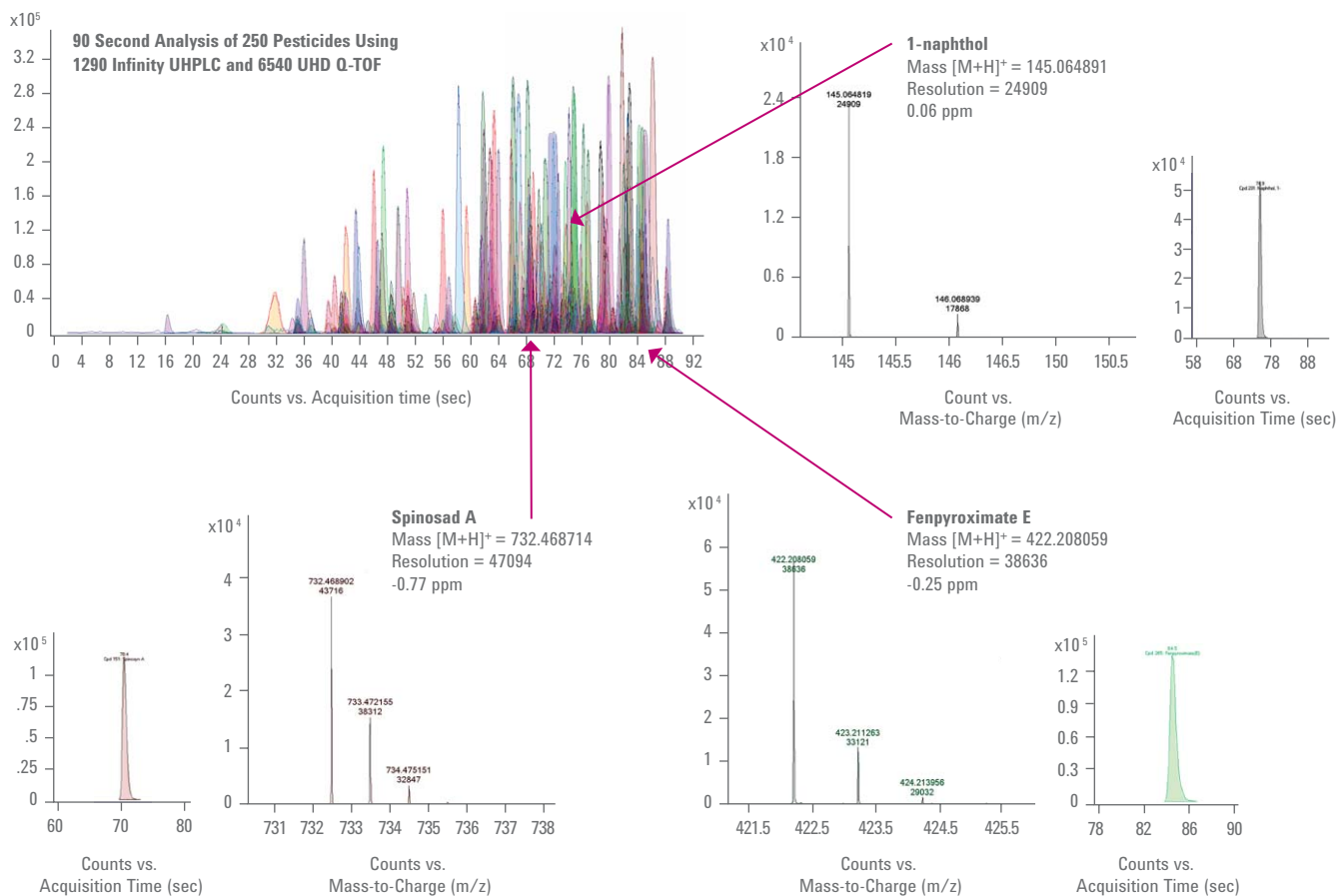
Analog to digital (ADC) TOF provides **accurate mass over the entire mass range and with a high dynamic range**.



4 Ghz ADC electronics improve mass accuracy, resolution and sensitivity. Dual gain amplifiers **extend dynamic range**.

Designed for the Most Demanding Applications

The Agilent 6540 Q-TOF LC/MS system delivers exceptional MS and MS/MS analyses for applications that demand precise accurate mass measurements, without compromising sensitivity and speed. In the example below, the 6540 was used in combination with an Agilent 1290 Infinity LC to analyze a pool of 250 pesticides in less than 90 seconds with excellent chromatographic separation and mass resolution across the entire mass range.



Powerful Data Mining Capabilities

Agilent's MassHunter Workstation software is a compound-centric data mining and navigation system designed to efficiently analyze complex MS data. MassHunter's qualitative analysis tools include molecular formula generation, accurate mass/retention time (AMRT) database searches, MS/MS library searches for confident compound identification.

Learn more

www.agilent.com/chem/QTOF

Find a local Agilent customer center

www.agilent.com/chem/contactus

USA and Canada

1-800-227-9770

agilent_inquiries@agilent.com

Europe

info_agilent@agilent.com

Asia Pacific

inquiry_lsca@agilent.com

For Research Use Only. Not for use
in diagnostic procedures. This information
is subject to change without notice.

© Agilent Technologies, Inc. 2013
Printed in the U.S.A. May 9, 2013
5991-2146EN



Agilent Technologies