

# Permanent Gases on a COX Module Using an Agilent 490 Micro GC

## Application Note

Environmental

### Authors

Simone Darphorn-Hooijschuur and  
Marijn van Harmelen

Avantium

Amsterdam

The Netherlands

Remko van Loon and Coen Duvekot  
Agilent Technologies, Inc.

### Abstract

This application note demonstrates the capabilities of the Agilent J&W CP-COX column with the Agilent 490 Micro GC, including separation of permanent gases and backflush possibilities to ensure extended column lifetimes.

### Introduction

Separation of permanent gases is usually performed on a Molsieve column. This column offers the best separation for all permanent gases but also has some severe drawbacks. Water and carbon dioxide do not elute from a Molsieve column under regular GC conditions. A bake out at high temperatures (250 – 300 °C) is needed to fully regenerate the column. Regeneration is very time consuming in a Micro GC usually taking overnight or longer because the maximum temperature is 180 °C. In addition, it is likely that regeneration from moisture does not occur at this temperature.

If there is no need to separate oxygen and nitrogen, the CP-COX column is a better alternative. It delivers good separation of permanent gases, and carbon dioxide elutes from the column. CP-COX is an ideal alternative for a Molsieve column, offering prolonged lifetime and instrument uptime.



**Agilent Technologies**

## Experimental

### Instrumentation

An Agilent 490 Micro GC system with a CP-COX column module was used for these experiments. The CP-COX column module was equipped with a heated injector and an optimal precolumn with backflush.

### Conditions

Column temperature	100 °C
Carrier gas	Argon, 100 kPa
Backflush to vent time	13 s
Injection time	80 ms
Injection temperature	110 °C
Sample line temperature	100 °C
Sampling time	30 s
Stabilization time	5 s
Run time	200 s

### Sample Information

Standard gas samples were used. Concentrations were in % levels.

Table 1. Repeatability Figures Per Component on Peak Area

Run	He	H <sub>2</sub>	N <sub>2</sub>	CO	CH <sub>4</sub>	CO <sub>2</sub>
1	943213	16024030	20593423	1439534	1535598	1064007
2	947355	16092042	20685887	1444814	1538714	1062243
3	949818	16142635	20749728	1446996	1544418	1070193
4	949808	16167426	20781405	1449939	1542239	1066091
5	952725	16194789	20815739	1453498	1539162	1066940
6	952107	16206479	20826967	1456289	1543749	1063772
7	954648	16228802	20856620	1455219	1548126	1074325
8	954635	16249294	20879589	1456795	1547760	1079645
9	955454	16251565	20883920	1456611	1552320	1064839
10	955872	16250493	20901246	1473831	1547242	1065483
Average	951563.5	16180756	20797452	1453353	1543933	1067754
St. Dev	4053	75870	97930	9249	5122	5456
RSD%	0.43	0.47	0.47	0.64	0.33	0.51

## Results and Discussion

The above settings produce the chromatogram shown in Figure 1, with repeatability data in Table 1.

The chromatogram shows a baseline separation of helium and hydrogen. Oxygen and nitrogen eluted as a single peak but separate from carbon monoxide and methane. Carbon dioxide eluted perfectly.

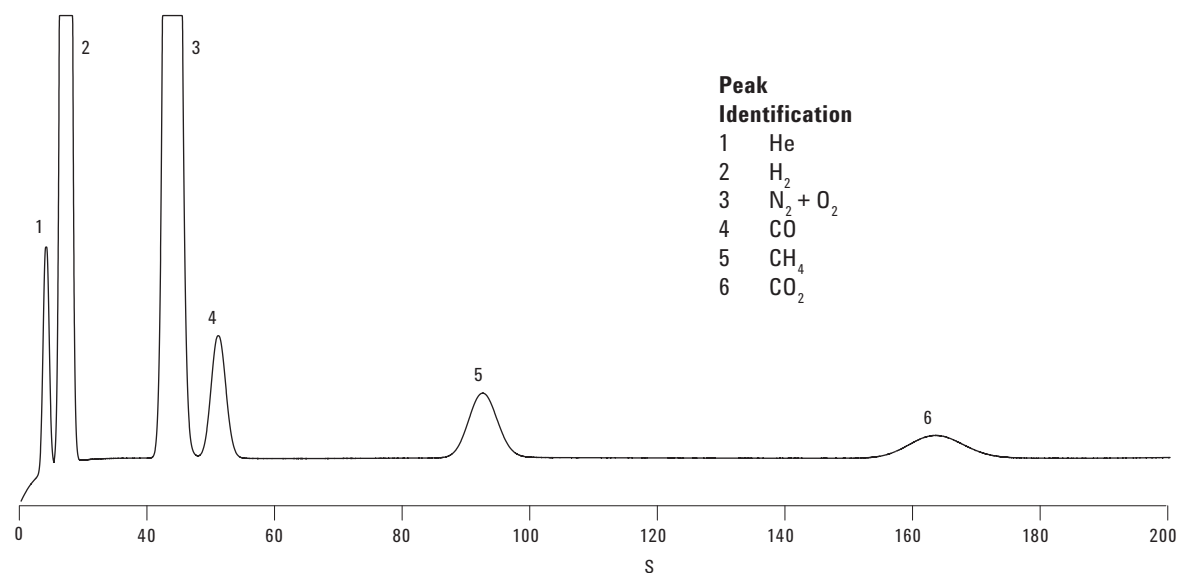


Figure 1. Excellent baseline separation of a gas sample on an Agilent CP- COX column.

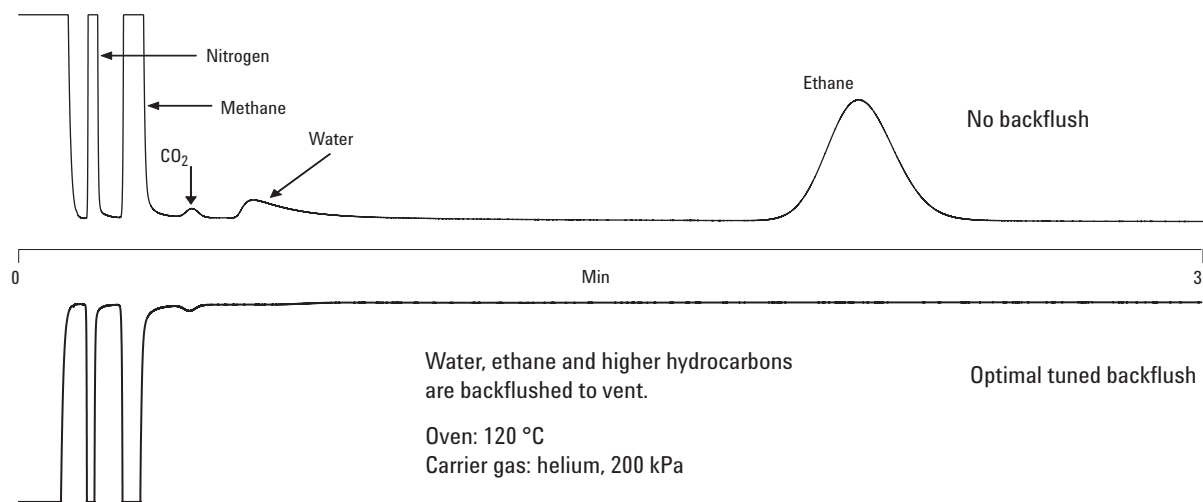


Figure 2. Backflush of water and ethane.

Other components such as water and higher hydrocarbons were backflushed to vent.

If the backflush time is set at a high value then virtually all the sample components enter the analytical column and eventually elute. However, if higher hydrocarbons are present the CP-COX column is polluted because these components elute late and can influence the succeeding analysis.

Figure 2 shows the elution of water and ethane if no backflush is applied. If the backflush time is optimally tuned, water, ethane and higher hydrocarbons are backflushed to vent and does not enter the analytical column.

## Conclusion

For the analysis of permanent gases the Agilent J&W CP-COX column is a good alternative to the commonly used Molsieve column.

Although the CP-COX column does not separate oxygen and nitrogen, it does separate hydrogen and helium. In addition, carbon dioxide is analyzed and water elutes from the CP-COX column. Repeatability figures are good, ensuring reliable analysis results.

The COX module can be equipped with a precolumn. This allows backflush of higher components and prolongs column lifetime.

The Agilent 490 Micro GC is a rugged, compact and portable “lab-quality” gas analysis platform. When the composition of gas mixtures is critical, this fifth generation Micro Gas Chromatograph generates more data in less time for faster and better performance.

## For More Information

For more information on our products and services, visit our Web site at [www.agilent.com/chem](http://www.agilent.com/chem).

[www.agilent.com/chem](http://www.agilent.com/chem)

Agilent shall not be liable for errors contained herein or for incidental or consequential damages in connection with the furnishing, performance, or use of this material.

Information, descriptions, and specifications in this publication are subject to change without notice.

© Agilent Technologies, Inc., 2012  
Printed in the USA  
September 6, 2012  
5990-7054EN



**Agilent Technologies**