



Solvents

Fast analysis of ethanol presence in bottles

Application Note

Environmental

Authors

Agilent Technologies, Inc.

Introduction

Gas chromatography with the Agilent 490 Micro GC and an Agilent PoraPLOT Q column checks calibration bottles for the presence of residual solvent in 65 seconds.

Calibration bottles have to be checked for the presence of residual solvent. A fast method is required to do this.



Agilent Technologies

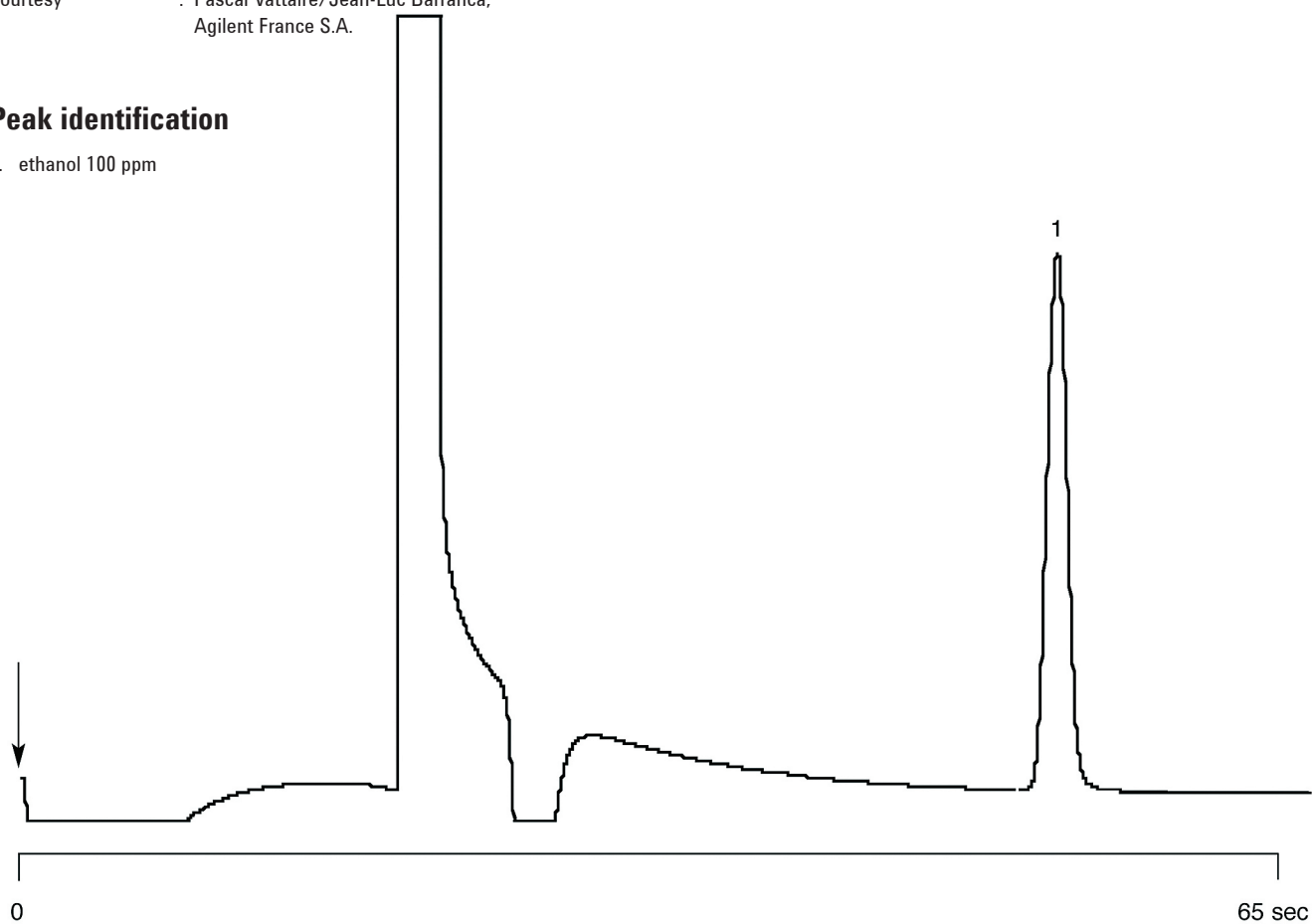
Conditions

Technique : Micro-GC
Column : Agilent PoraPLOT Q, 0.25 mm x 10 m PLOT
(Part no. CP738050)
Temperature : 130 °C
Carrier Gas : He, 150 kPa (1.5 bar, 21 psi)
Pressure Program : no
Heated Injector : yes
Injection Time : 255 msec
Concentration Range : 100 ppm

Courtesy : Pascal Vattaire/Jean-Luc Barranca,
Agilent France S.A.

Peak identification

1. ethanol 100 ppm



www.agilent.com/chem

This information is subject to change without notice.

© Agilent Technologies, Inc. 2011

Printed in the USA

31 October, 2011

First published prior to 11 May, 2010

A01620



Agilent Technologies